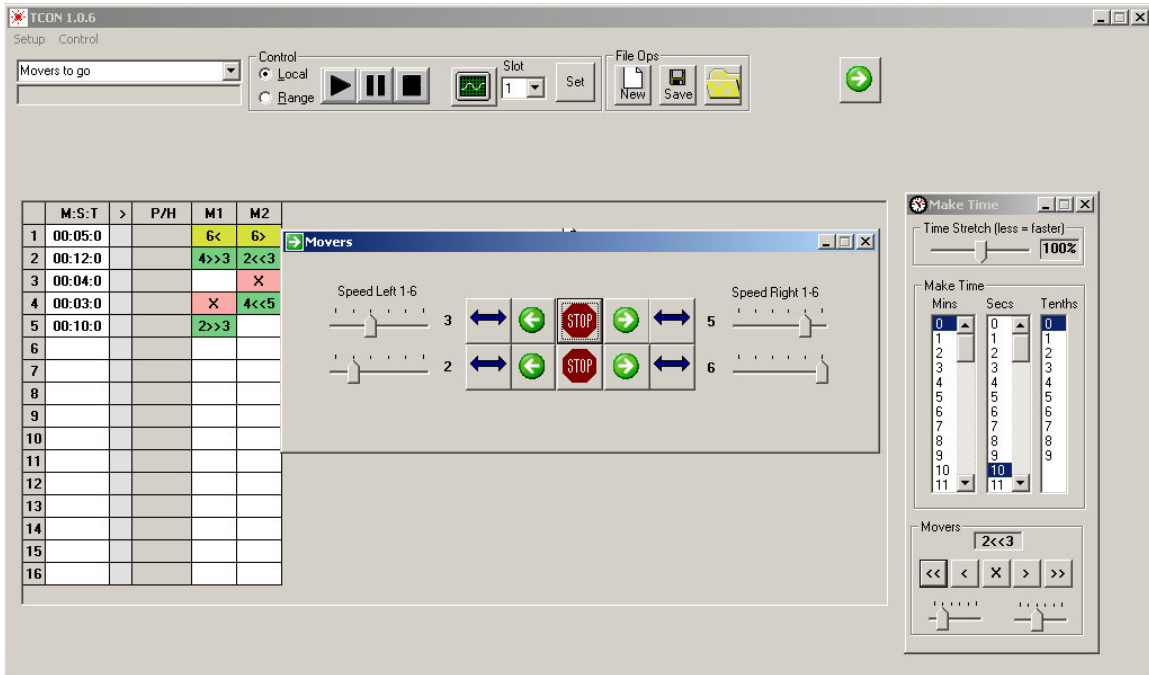


TCON

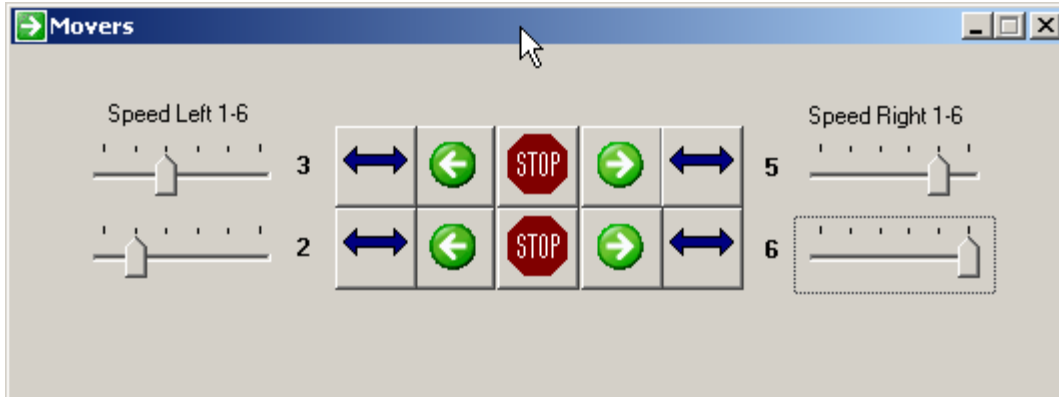
Target Control System Mover Supplement

This is a supplement to the TCON User Guide covering the operation of movers. General operation of the system is covered in the User Guide.



The screenshot above shows a programmed scenario using two movers. The screen for direct real-time control of the movers is on top in the middle as well.

The smaller screen on the right (Make Time) allows you to build the time and motion commands to embed in a scenario as shown on the left side of the screen. These are explained below.

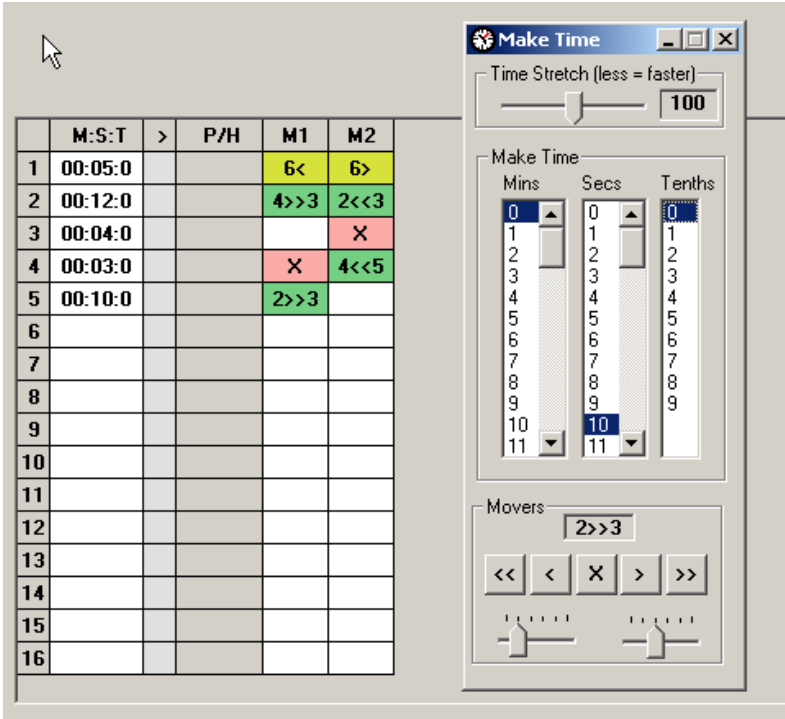


Mover Direct Control

The Movers screen provides direct control of the movers. It will try to stay on top of any other screen but you can minimize it to the task bar. Clicking on the green arrow icon at top right of the main screen will bring the Movers screen back.

You can start a mover by telling it to go either to the left or to the right. Click on a green arrow and the mover will start and travel to the end and stop. Click on a double arrow and it will start in auto-reverse mode and will continue running, back and forth, until you click the stop button.

The sliders to the left and right let you set speeds for the respective directions that will apply when you click a motion command. You can either drag the slider or click to the left or right of its position. The movers have a range of speeds from 1 to 6. If a mover is in motion, moving the slider does not automatically change the speed. The speed only changes when you click on a motion command.



Scenario Editing

Shown here is a scenario using the movers and the Make Time screen used to generate the scenario commands. When a scenario executes, it steps through the minutes, seconds and tenths values in the M:S:T column. At each step, it executes any commands for the motors that it finds in the M1 and M2 columns. Any blank cell is ignored. At the end of a scenario, the system stops the movers.

The possible commands are as follows.

- X Stop
- < or > run to left or right and stop at end of track
- << or >> run to left or right in auto-reverse and continue running.
- The numbers (1 to 6) are the speeds to be used.

The system does not require you to type a command into a scenario cell. Use the Make Time screen to build a command, either for the M:S:T column or for a mover command cell. Build the command you want, then click on a scenario cell and the command will be entered

In the Mins, Secs, Tenths panel, just arrange to sliders then click on the scenario.

In the Movers panel, the two sliders at the bottom are used to specify the left and right speeds. The row of motion buttons adds that part of the command. To clear a mover command, click on the readout in the Movers panel of the Make Time screen to clear it, then click on any scenario cell you wish to clear.